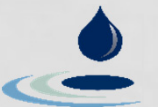




M2 ENVIRONMENTAL CONNECTIONS

CORPORATE PROFILE



WHO ARE WE?



MENCO is an **environmental consultancy** dedicated to guiding businesses, government agencies, and organisations through complex **environmental processes**. We specialise in securing authorisations, engaging stakeholders, conducting assessments and impact studies, and ensuring regulatory compliance. With strong **technical expertise** and a **practical approach**, we deliver streamlined, **end-to-end solutions** that support **sustainability** and safeguard natural resources.



VISION AND MISSION

At MENCO, our vision is rooted in **core environmental principles**—supporting clients in the conservation, protection, and **responsible management** of natural resources. We strive to promote **sustainable use** through proactive, **transparent environmental strategies** that balance **ecological care** with **economic practicality**.



PRINCIPLES AND SHARED VALUES

- Integrity
- Accountability
- Commitment
- Responsibility
- Innovation
- Dedication
- Honesty



Johan Maré
M.Sc Microbiology
SACNASP Pr. Sci. Nat

36 Years Experience



Morné de Jager
B.Eng. Chemical

26 Years Experience



Hanjo Fourie
B.Sc. Environmental Management
Aquatic Ecologist: NAEHMP
SASAqS: 0028
SACNASP Pr. Sci. Nat. (pending): 125420

12 Years Experience



Dr Michelle Strydom (Thompson)
PhD Zoology
SACNASP Pr. Sci. Nat. 117994

4 Years Experience



Reuhl Lombard
M.Sc. Zoology
SACNASP Pr. Sci. Nat

8 Years Experience



Mathys de Beer
B.Sc. Hons Environmental Management
Aquatic Ecologist: NAEHMP
SASS5 accredited

7 Years Experience



Francois de Vries
B.Tech: Environmental Science

6 Years Experience



Abraham Smit
M.Sc. Environmental Management
EAPASA Candidate EAP

3 Years Experience



Jacques Potgieter
M.Sc. Environmental Science
SACNASP Cand. Sci. Nat 141740

3 Years Experience



“Great things in business are never done by one person; they’re done by a team of people”
- Steve Jobs



MEMBERSHIP / AFFILIATIONS

MENCO employees are registered with the following organisations:

- South African Council for Natural Scientific Professions (SACNASP)
- Water Institute of South Africa (WISA)
- Environmental Assessment Practitioners Association of South Africa (EAPASA)- In Progress
- River Health Programme as SASS5 Practitioners
- Southern African Society of Aquatic Scientists



ACCOMPLISHMENTS

- Initiation of the Witbank Dam Flood Release Scheme
- Development of the Integrated Water and Waste Management structure
- Author and co-authors of the:
 - Registration Guideline on Water Uses
 - Development of the DW Forms (Waste Related)
 - Internal Guideline for Water Use Authorization
 - External Guideline for Water Use Authorization
 - Operational Guideline on the IWWMP
- Part of task-team developing the Best Practice Guidelines (Mine Closure & Mine Water Management)
- National Training: DWA Regional Offices on above
- KFA Leader: *Harties Metsi a Me* – Compliance and Enforcement



AUTHORISATION SERVICES

- Environmental Services

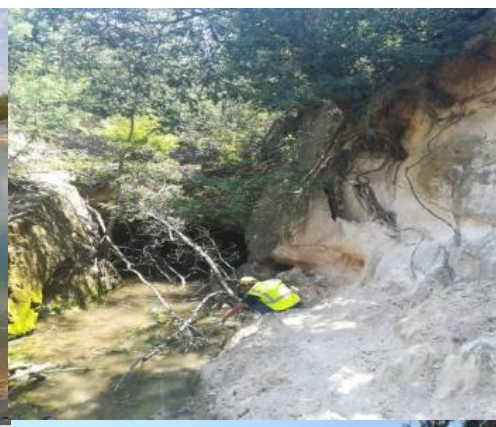
- Comprehensive Environmental Authorisations (NEMA)
- Water Use License Application (NWA)
- Mining Right Applications (MPRDA)
- Environmental Management Programmes
- Legislative required environmental reporting
- Impact and Resource Management
- Integrated Water and Waste Management Plans
- Monitoring and Performance Assessments
- Internal & External WUL Auditing
- EMPr Performance Auditing
- Environmental Auditing (S21 c & i)



Specialist Services

Field	Client
Wetland Assessments and Monitoring; Wetland Delineations; Wetland Offset; Wetland Rehabilitations.	WPB Colliery; Ibhuhesi Ore Exploration; Sasol Mining and Synfuels; Londani Coal; Lefa Coal; AfriSam; Kego Mining; Vico Mining.
Surface Water Assessment; Flow regime and hydrology; Surface water monitoring.	Andalusite Resources; VMS Resorts; Heineken Brewery; Rietspruit Crushers; BGM Mining; Xanadu Nature Estate.
Terrestrial Biodiversity; Compliance and Full Assessment; Alien Invasive Control Programmes.	Jones & Wagener; Nedan Oil, Fuchs Lubricants; Astron Energy; Brakfontein Colliery.
Avifauna; Scoping and Full Impact Assessments; Monitoring Programmes.	Jones & Wagener, ABO Energy, AGV
Bio-monitoring and toxicity; Aquatic Ecology (SASS5, IHAS, MIRAI); Fish Response Assessment Index; Geomorphology.	Astron Energy; Sasol Mining and Synfuels; Heineken Brewery; Vlakfontein; WPB Colliery; AfriSam Operations; Kleinfontein Colliery.
GIS Mapping; Spatial Development Frameworks; Modelling.	Vembe and Capricorn District Municipalities; Rand Water (Harties-Metsi-A-Me).
Noise Impact Assessments and Monitoring; Blasting and Vibration Assessment;	Digby Wells & Associates; Savannah Environmental; Sephaku Cement; GIBB.





COMPANY STRUCTURE

Specialists

- Surface water
- Water and Salt Balances
- Fauna and Flora
- Avifauna
- Wetland
- Noise
- Environmental Audits
- Water Use and Environmental Authorization
- Waste Management

Data Management

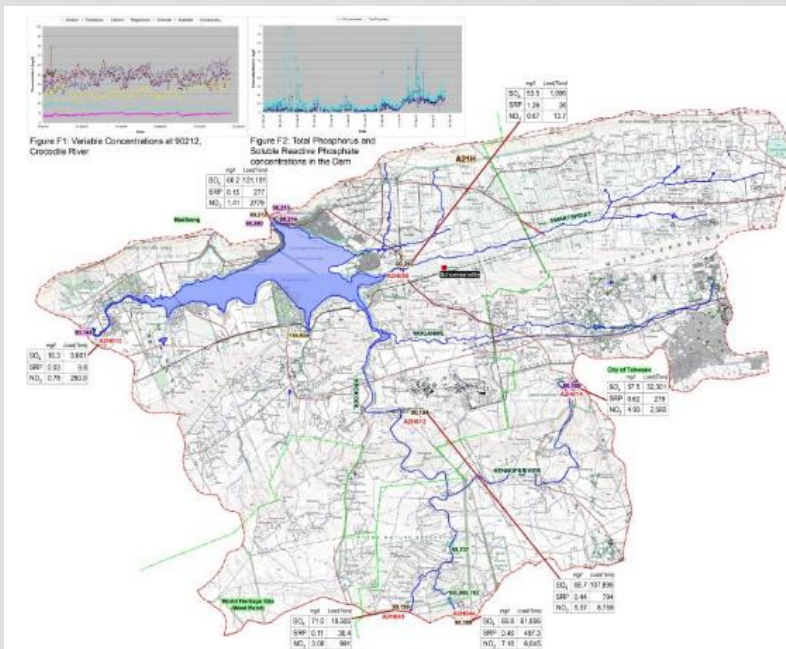
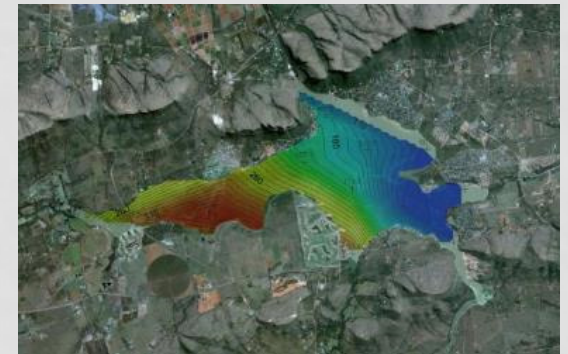
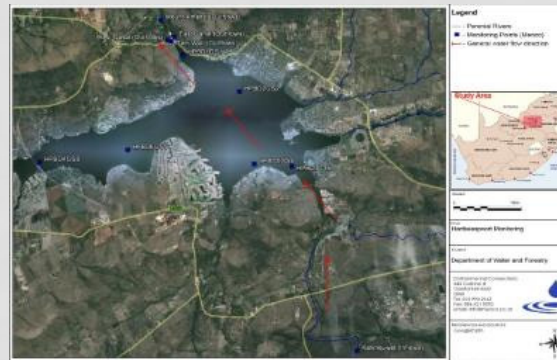
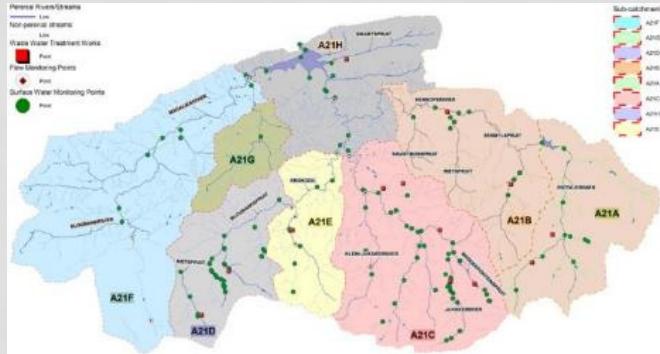
- MIS Development
- Data management
- Reporting
- GIS

Fieldwork

- Wetland delineation
- Bio-monitoring
- Ecological surveys
- Noise Monitoring
- Borehole sampling
- Monitoring Systems
- SAC Imagery
- Connon systems
- Weather Stations
- Dust Monitoring



ENVIRONMENTAL STUDIES

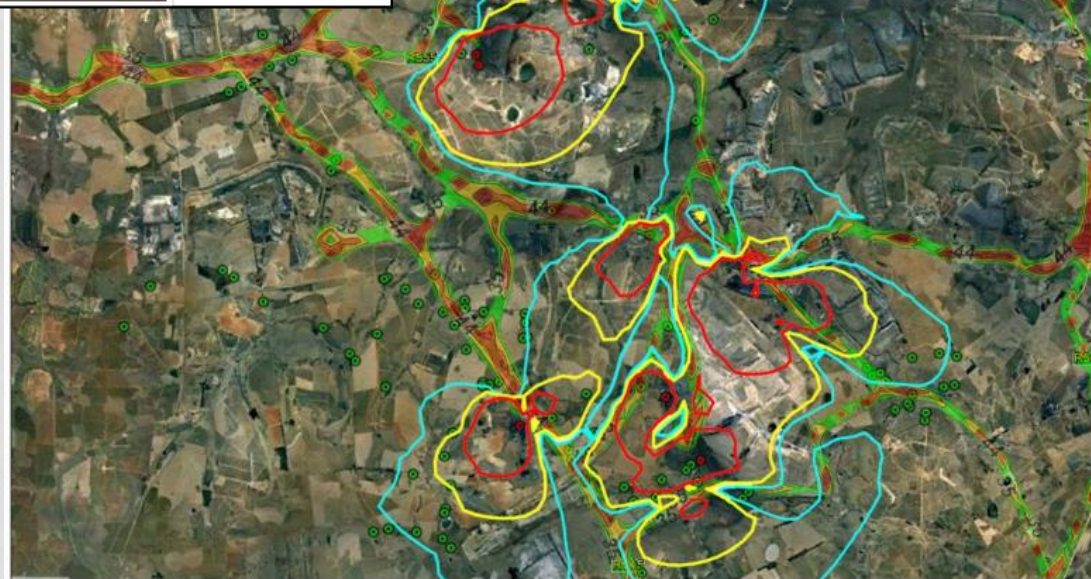
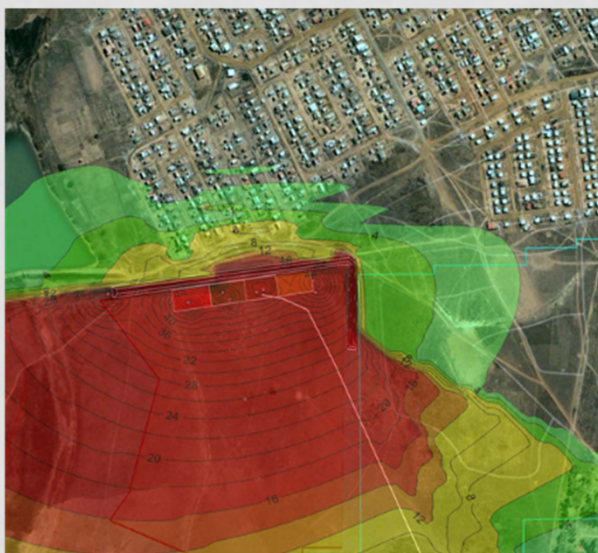
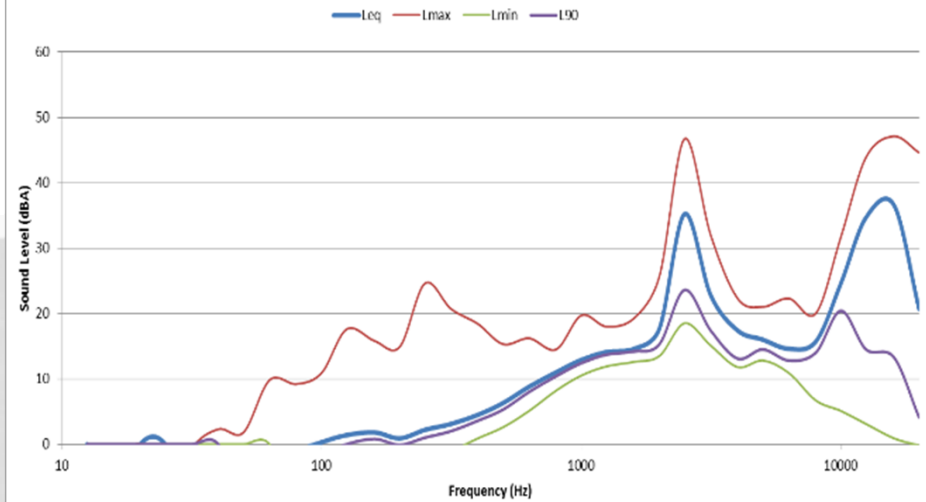


NOISE STUDIES



EAR
Enviro Acoustic Research

Spectral ambient sound character



Legend

- Noise Sensitive Development
- Conceptual Xstrata Mining Activity
- Contours of Sound
- 3 dBA Change
- 5 dBA Change
- 10 dBA Change

Scale
0 5,000m

Project Location
Xstrata

Environmental Connections
645 Corline st
Carletonville East
0060
Tel: 012 993 2165
Fax: 086 621 0292
Email: info@menca.co.za

Project Location Map
South Africa

REFERENCES AND SOURCES
GoogleEarth
Xstrata

A FEW OF OUR CLIENTS

AfriSam



THE
KINGDOM
RESORT



Jones & Wagener
INTERNATIONAL
Engineering & Environmental Consultants

KINGRA



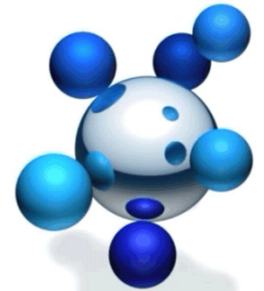
ABO ENERGY



MENAR

SOLA

canyoncoal



petmin

EST. 1873
Heineken



water affairs
Department:
Water Affairs
REPUBLIC OF SOUTH AFRICA



Zululand Anthracite Colliery

Subsolar

ARM
ANDALUSITE

**ASTRON
ENERGY**

samancor



Freeze
Environmental Consultants (Pty) Ltd

Benoni Gold Mining Company
BGM
MINING & AGGREGATE



biosphere
Enviro Solutions



GIBB

PEBBLE ROCK
GOLF & BUSHVELD ESTATE

LIBERTY

CONTACT DETAILS



M2 Environmental
Connections (Pty) Ltd

Tel no. 012 004 0362

Mobile: 083 389 6617

Fax no. 086 621 0292

johan@menco.co.za

www.menco.co.za

P.O. Box 2047

Garsfontein East

0060

